



Omni™ User Guide



Universal Controller

OMNI is an interactive educational system developed to assist a certified instructor. It is not a substitute for a comprehensive understanding of the subject matter and not intended for clinical decision making.

User Guide OM.3. 1.12
© 2012 Gaumard Scientific Company
All Rights Reserved
www.Gaumard.com

Contents

END USER LICENSE AGREEMENT	4
CARE AND CAUTIONS	6
OVERALL WARNINGS	6
PROCEDURES	6
STORAGE	6
CLEANING.....	6
GETTING STARTED	7
OVERVIEW	7
OMNI FEATURES	7
<i>Birthing</i>	7
<i>Blood Pressure</i>	7
<i>CPR</i>	7
<i>Cyanosis</i>	7
TERMINOLOGY	7
OMNI™ PACKAGE	7
OMNI™ SET UP	7
WORKING WITH OMNI™	8
OMNI™ MAIN SCREEN	8
<i>Feedback Graphics</i>	8
<i>Current Settings</i>	8
<i>Navigation Menus</i>	8
CPR TOOLS	8
CODE BLUE®	8
<i>Code Blue Components</i>	8
<i>Code Blue Menus</i>	9
CPRLINK™	10
<i>CPRLink Minimum System Requirements</i>	10
<i>Setup</i>	10
<i>CPR Screen</i>	11
<i>Provider Actions Screen</i>	12
<i>CPRLink Menus</i>	15
APPENDIX.....	19
<i>Where is the Serial Number of Omni and my Simulator</i>	19
<i>Screen Backlight</i>	19
<i>How to reboot Omni</i>	19
<i>Check for Updates</i>	19
TROUBLESHOOTING.....	20
<i>General Troubleshooting Guide</i>	20
CONSUMABLES AND REPLACEMENTS	20
<i>Selected Parts List</i>	20
CONTACT US	21
WARRANTY	22
<i>EXCLUSIVE ONE-YEAR LIMITED WARRANTY</i>	22

End User License Agreement

This is a legal agreement between you, the end user, and Gaumard® Scientific Company, Inc. ("Gaumard"). This software is protected by copyright laws and remains the sole property of Gaumard. By installing the CPRLink (the "Software") media, you agree to be bound by the terms of this agreement. If you do not agree to the terms of this agreement, promptly return the uninstalled media and accompanying items to Gaumard at the address indicated below.

1. Grant of License. Gaumard hereby grants to you (an individual or institution) the right to install and activate the Software on one computer for use with one Interactive patient simulator system. The software may also be installed on any number of other computers at the same institution so that students may access the learning resources. One copy of the software may be made for backup purposes. You may not network this Software, or allow multiple users unless you purchased a multi-user workstation license. Sharing this Software with other individuals or allowing other individuals to view the contents of this Software is in violation of this license.

2. Copyright. The Software is owned by Gaumard and protected by United States copyright laws and international treaty provisions. Therefore, you must treat this Software like any other copyrighted material. You may not make this Software or copies thereof available in any manner or form or use, copy or transfer the Software, in whole or in part, except as provided herein.

3. Other Restrictions. You may not rent or lease this Software to any other party. You may not alter, merge, modify, adapt, reverse engineer, decompile or disassemble the software, or disclose the contents of this Software to any other party.

4. Electronic Transmission of Software. If you received the Software by electronic transmission or by Internet delivery, by installation of the Software, you acknowledge that you have read and understand this license agreement and agree to be bound by its terms and conditions.

5. Term of Agreement. The term of this Agreement and the license granted to you pursuant hereto shall commence upon installation of this Software. This Agreement and the license granted herein may otherwise be terminated by Gaumard in the event that you are in breach of any provision of this Agreement. In the event of termination, you agree to immediately return this Software, accompanying items, and any copies thereof to Gaumard.

6. LIMITED WARRANTY

(A) THE CD-ROM MEDIA (THE "MEDIA") WHICH CONTAINS THIS SOFTWARE IS WARRANTED, FOR A PERIOD OF 30 DAYS FROM THE DATE OF PURCHASE, TO BE FREE FROM DEFECTS IN MATERIAL AND WORKMANSHIP. ELECTRONIC TRANSMISSION IS WARRANTED TO BE FREE FROM DEFECTS AT THE MOMENT OF TRANSMISSION. YOUR SOLE AND EXCLUSIVE REMEDY, AND GAUMARD'S SOLE LIABILITY, IS TO REPLACE THE DEFECTIVE MEDIA OR TO REPEAT THE ELECTRONIC TRANSMISSION PROVIDED THAT YOU NOTIFY GAUMARD IN WRITING OF SUCH DEFECT OR DEFECTIVE TRANSMISSION AND RETURN THE DEFECTIVE MEDIA, IF ANY, DURING THE 30-DAY WARRANTY PERIOD.

(B) EXCEPT AND TO THE EXTENT EXPRESSLY PROVIDED IN PARAGRAPH (A), THE SOFTWARE AND ACCOMPANYING WRITTEN MATERIALS ARE PROVIDED ON AN "AS IS" BASIS, WITHOUT ANY WARRANTIES OF ANY KIND, INCLUDING, BUT NOT LIMITED TO, ANY IMPLIED WARRANTIES OF MERCHANTABILITY OR FITNESS FOR ANY PARTICULAR PURPOSE. NO ORAL OR WRITTEN INFORMATION OR ADVICE GIVEN BY GAUMARD, ITS DEALERS, DISTRIBUTORS, AGENTS OR EMPLOYEES SHALL CREATE A WARRANTY OR IN ANY WAY INCREASE THE SCOPE OF THIS WARRANTY, AND YOU MAY NOT RELY ON ANY SUCH INFORMATION OR ADVICE. GAUMARD DOES NOT WARRANT, GUARANTEE, OR MAKE ANY REPRESENTATIONS REGARDING THE USE OR THE RESULTS OF USE, OF THE SOFTWARE OR WRITTEN MATERIALS IN TERMS OF CORRECTNESS, ACCURACY, RELIABILITY, CURRENTNESS, OR OTHERWISE, AND THE ENTIRE RISK AS TO THE RESULTS AND PERFORMANCE OF THE SOFTWARE IS ASSUMED BY YOU. IF THE SOFTWARE OR WRITTEN MATERIALS ARE DEFECTIVE, YOU AND NOT GAUMARD OR ITS DEALERS, DISTRIBUTORS, AGENTS, OR EMPLOYEES, ASSUME THE ENTIRE COST OF ALL NECESSARY SERVICING, REPAIR OR CORRECTION OTHER THAN EXPRESSLY DESCRIBED ABOVE.

(C) NEITHER GAUMARD NOR ANYONE ELSE WHO HAS BEEN INVOLVED IN THE CREATION, PRODUCTION OR DELIVERY OF THIS PRODUCT SHALL BE LIABLE FOR ANY DIRECT, INDIRECT, CONSEQUENTIAL OR INCIDENTAL DAMAGES (INCLUDING DAMAGES FOR LOSS OF BUSINESS PROFITS, BUSINESS INTERRUPTION, LOSS OF BUSINESS INFORMATION, AND THE LIKE) ARISING OUT OF THE USE OR INABILITY TO USE SUCH PRODUCT OR RELATED TO THIS AGREEMENT EVEN IF GAUMARD HAS BEEN ADVISED OF THE POSSIBILITY OF SUCH DAMAGES. GAUMARD SHALL NOT BE LIABLE TO YOU FOR ANY INDIRECT, SPECIAL, INCIDENTAL, OR CONSEQUENTIAL DAMAGES OR LOST PROFITS ARISING OUT OF OR RELATED TO THIS AGREEMENT OR YOUR USE OF THE SOFTWARE AND/OR THE RELATED DOCUMENTATION, EVEN IF GAUMARD HAS BEEN ADVISED OF THE POSSIBILITY OF SUCH DAMAGES. IN NO EVENT SHALL GAUMARD'S LIABILITY HERE UNDER, IF ANY, EXCEED THE PURCHASE PRICE PAID BY YOU FOR THE SOFTWARE.

ALL RIGHTS NOT EXPRESSLY GRANTED IN THIS LICENSE AGREEMENT ARE RESERVED BY GAUMARD.

ACKNOWLEDGMENT

BY INSTALLATION OF THIS SOFTWARE, YOU ACKNOWLEDGE THAT YOU HAVE READ AND UNDERSTAND THE FOREGOING AND THAT YOU AGREE TO BE BOUND BY ITS TERMS AND CONDITIONS. YOU ALSO AGREE THAT THIS AGREEMENT IS THE COMPLETE AND EXCLUSIVE STATEMENT OF AGREEMENT BETWEEN THE PARTIES AND SUPERSEDES ALL PROPOSED OR PRIOR AGREEMENTS, ORAL OR WRITTEN, AND ANY OTHER COMMUNICATIONS BETWEEN THE PARTIES RELATING TO THE LICENSE DESCRIBED HEREIN.

Care and Cautions

Overall Warnings

Damage caused by misuse may void the manufacturer's warranty. Failure to comply with the following guidelines could result in injury or damage to the equipment.

Do not disconnect the communication cable (Cat 5) from Omni or simulator during a training exercise to avoid communication and power interruption.

Do not connect the simulator or Omni using a Cat 5 cable to a computer, LAN network or unauthorized equipment. Doing so will cause serious damage to the equipment.

Procedures

Do not attempt to intubate without lubricating the airway adjunct with lubricant (provided). Failure to do so will make intubation very difficult and is likely to result in damage.

When simulating drug administration **via endotracheal tube, providers must use an empty syringe.** Passing liquids into the trachea or esophagus may cause internal damage.

Mouth to mouth resuscitation without a barrier device is not recommended, as it will contaminate the airway. Treat your simulator with the same precautions that would be used with a real patient.

Storage

Store OMNI and your simulator in a cool, dry place. Extended storage above 85 degrees Fahrenheit (29 Celsius) will cause the simulator to soften and slowly warp. It is acceptable to operate OMNI and your simulator at an ambient temperature of 95 degrees Fahrenheit (35 Celsius).

Cleaning

Clean OMNI with a dry cloth.

Do not expose Omni to water or excessive dust.

Your simulator should be cleaned with a cloth dampened with diluted liquid dishwashing soap. If medical adhesives remain on the skin, clean with alcohol wipes.

Getting Started

Overview

Omni is a hand held controller compatible with Gaumard simulators. Connect Omni to your simulator using a wired connection and:

- Automatically detect the simulator and display specific menus
- Control the simulator functions
- Display compressions and ventilations in real time
- Train CPR with audible coaching tones
- Connect to a PC and monitor, view, store and print results of CPR exercises

Omni Features

Birthing

Omni controls birthing simulations from the onset of labor to delivery. Modify delivery time, fetal heart rate or activate shoulder dystocia.

Blood Pressure

Control the blood pressure, pulse rate and Korotkoff sounds volume of your simulator. Set an auscultatory gap interval.

CPR

Monitor compressions and ventilations and train using audible coaching tones.

Cyanosis

Change the skin color of the simulator to simulate peripheral and central cyanosis. Depending on the effectiveness of the provider intervention, Omni will improve or deteriorate the state of the simulator.

Terminology

It is wise to spend a moment familiarizing yourself with some of the terminology that will be used to discuss simulation with the Omni controller.

Facilitator - the person conducting the simulation; an instructor or lab staff member.

Provider - a person participating in the simulation as a healthcare provider.

Code Blue® –feature of Omni to monitor, train and evaluate CPR.

CPRLink - the application to monitor, train and evaluate CPR.

Omni™ Package

The Omni package includes:

- Omni Controller
- Communication Cable (Cat 5 cable)
- Quick Start Guide
- User Guide
- USB Cable*
- CPRLink™ CD*

*Omni Code Blue® Pack

Omni™ Set Up

Follow the steps below to connect and power on the Omni controller.

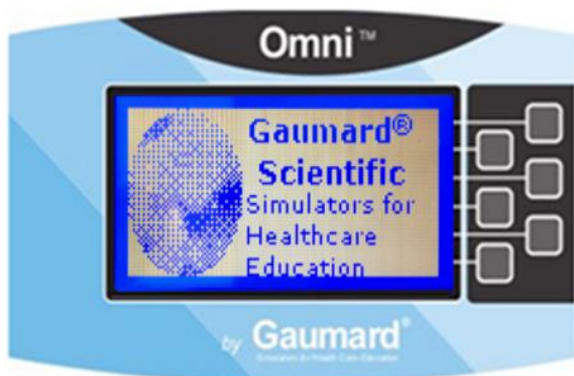
1. Connect the power supply to the power input on the simulator, and then connect the power supply to the wall outlet.



2. To power on the Omni controller, connect the communication cable to the simulator and, then Omni.



A startup screen is shown while Omni is detecting the simulator features.

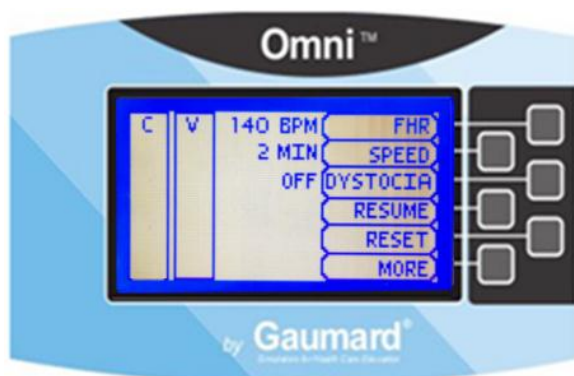


After the start up screen, Omni will automatically proceed to the main screen.

Working with Omni™

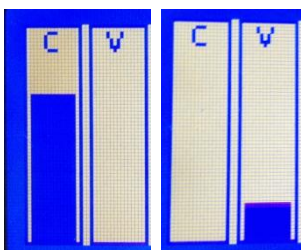
Omni™ Main Screen

The Omni main screen is divided in three sections, the Feedback Graphics, Current Settings and Navigation Menus. The navigation differs depending on the simulator detected by Omni. For example, the menu screen below corresponds to a Noelle Birthing Simulator.



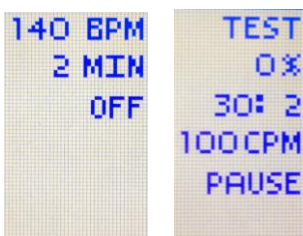
Feedback Graphics

Monitor and evaluate depth and cadence of compressions and ventilations in real time.



Current Settings

Current settings information is listed at the center of the screen. This information will vary depending on the simulator you use.



Navigation Menus

Edit the simulator settings using the navigation menus. The menu items will vary depending on the simulator you use. Select a menu item by pressing the soft key buttons located on the right side of the controller. Each menu has additional submenus or toggle selection. Use the submenus to decrease, increase, accept, or cancel values.



Submenus



CPR Tools

CODE Blue®

Code Blue is a CPR training tool incorporated in the Omni controller. It was designed to help teach CPR by monitoring cadence and depth of cardiac compressions and airway ventilations in real time.

i Information
If your simulator was ordered with Code Blue, Omni will recognize the additional feature and load the applicable menus.

⚠ Warning
Do not perform mouth to mouth ventilation since the simulator airway can be difficult to clean afterwards.

Code Blue Components

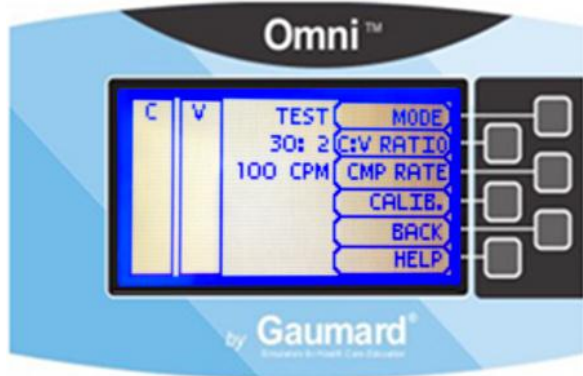
Code Blue consists of the Feedback Graphics and specialized menus to control:

- CPR Operational mode – TEST or COACH mode
- C:V Ratio – customize the compression to ventilation ratio
- Compression/Ventilation Rate – customize the compressions per minute

Furthermore, Code Blue can be calibrated to a specific standard to assess compressions and ventilations.

Code Blue Menu

When connected to the NOELLE® Birthing Simulator S550/550.100 or 551, press **MORE** from Omni Main Screen to access Code Blue.

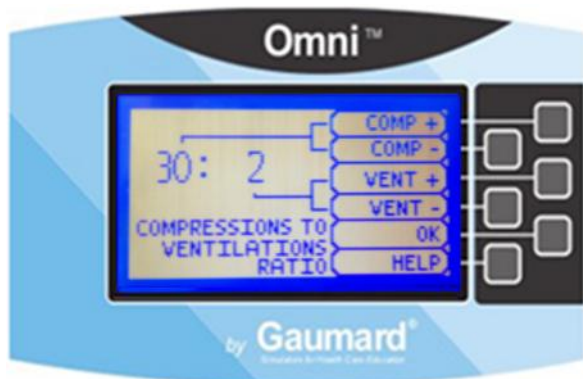


MODE

Toggle between **COACH** and **TEST** mode. The **COACH** mode generates audible tones to coach CPR ratio. A high-pitched beep signals the care provider to perform a compression and a low pitched-beep signals a ventilation. Toggle to the **TEST** mode to perform CPR without the audible cues.

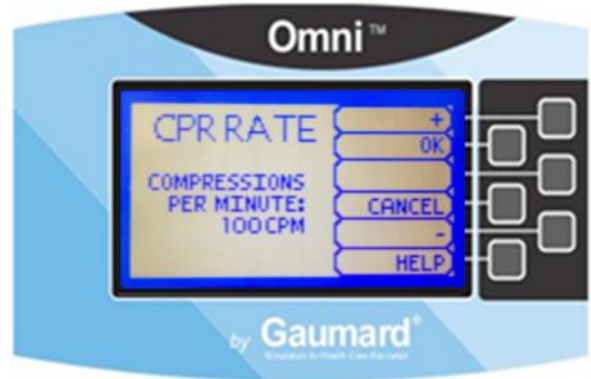
C : V RATIO (Compression to ventilation ratio)

Adjust the compression to ventilation ratio using the + and - buttons. Press **OK** to save the changes and return to previous screen. The default value for the C:V Ratio is 30 compressions to 2 ventilations.



CMP/VNT RATE (Compression or Ventilation rate)

The default value for the compression rate is 100 compressions per minute. Adjust rate using the '+' and '-' buttons. Press **OK** to save the changes and return to previous screen.



CALIB. (Calibration)

Calibrate the sensors inside the simulator using the calibration menu (**CALIB.**), to set the standard against which compression and ventilation will be evaluated during the exercise.

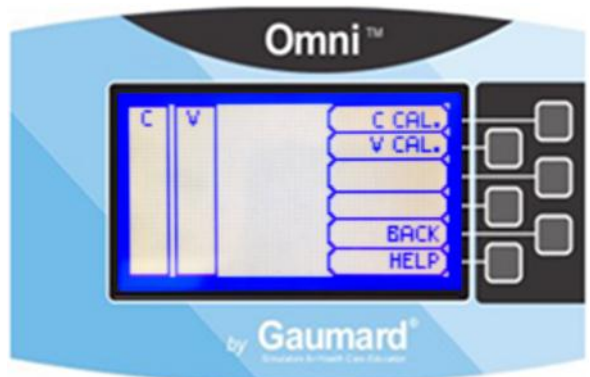
Choose which function you would like to calibrate between chest compressions (**C CAL.**) and artificial ventilations (**V CAL.**).

The chest compression and artificial ventilation calibration procedures follow similar steps.

Calibrating chest compressions:

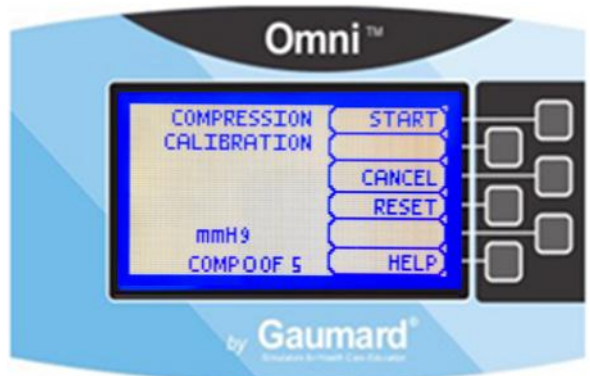
Depending on the simulator detected, the calibration menu (**CALIB.**) is found in the main screen or in the **MORE** menu.

1. Select **CALIB.** to enter the calibration menu.
2. For this example, select **C CAL.**



3. Press **START** to begin with the calibration.

Omni will ask you to perform a number of correct chest compressions. The facilitator should follow the text cue on the screen to perform just one compression at a time, until finished.



4. When Omni is ready to calibrate it will display **COMPRESS**.

5. Perform a correct compression.

Follow the text cue on the screen to perform the remaining four compressions. When the calibration is complete Omni will display **DONE**.

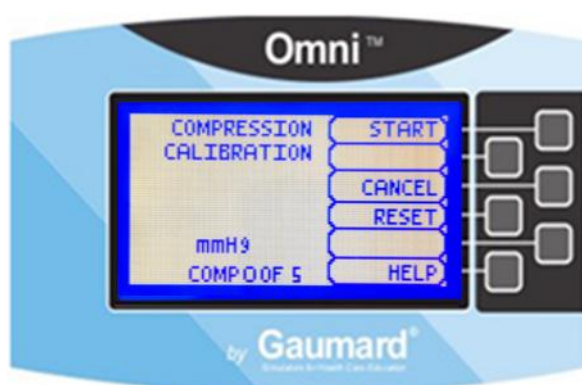
6. Press **SAVE**.

7. Select **V CAL.** and repeat steps 3-5 to calibrate ventilations.

Resetting Omni's Pressure Sensor

It is recommended that the Omni's pressure sensor is reset at altitudes greater than 1000 ft. to avoid inaccurate compressions and ventilations readings. **Perform the sensor reset procedure only as part of the initial calibration process.**

1. Select **RESET** within the compression / ventilation calibration menu.



After resetting the sensor, Omni will display **DONE**.

2. Select **SAVE** to finish.

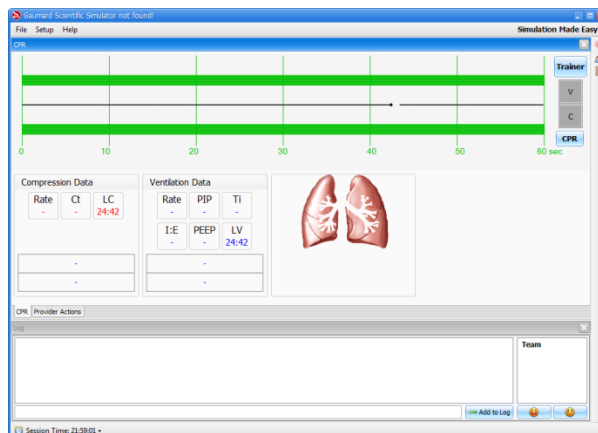


HELP

The Help menu is a generic assistance menu with the same content throughout. Go to the Help menu to modify the LCD backlight time and to view Omni and Simulator serial number. The Help menu also contains specific content depending on the simulator.

CPRLink™

CRPLink is an application that enables monitoring and logging of compressions and ventilations performed in real time by the user on a PC.



This software aims to provide additional testing and teaching tools for CPR using an interface to display a waveform graph of the compressions and ventilations.

CPRLink Minimum System Requirements

- Operating System: Windows XP or Windows 7
- Computer and processor: 1 gigahertz (GHz) or faster 32-bit (x86) or 64-bit (x64) processor
- Memory: 1 gigabyte (GB) RAM (32-bit) or 2 GB RAM (64-bit)
- Hard disk: 4 gigabyte (GB) available disk space
- Install media: CD/DVD Drive
- I/O Ports: USB port

Setup

CPRLink Software Installation

If installing the CPRLink software for the first time, follow the instructions listed below:

1. Insert the CPRLink installation CD in your PC.
2. Double click the installation file on the enclosed media.

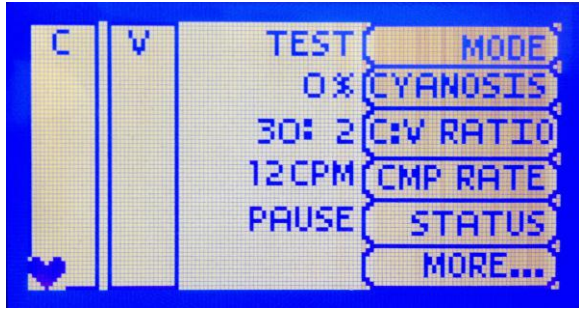
In case the auto run is disabled, open My Computer. In the My Computer window, open the drive that contains the CPRLink CD. Double-click on CPRLink and locate setup. Double-click on setup to start the installation.

3. Follow the instructions on your screen.

Equipment Set Up

1. Connect the power supply to the power input on the simulator, and then connect the power supply to the wall outlet.
2. Connect the communication cable to the simulator and to Omni.
3. Connect the USB cable to Omni and to the USB port of your PC.

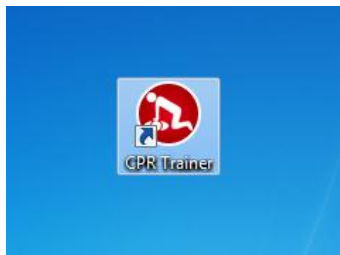
Omni will display a heart icon on the lower left side of the screen, when a connection with the PC has been established.



Warning
Do not start the CPRLink application until Omni is connected to the PC.

Starting CPRLink

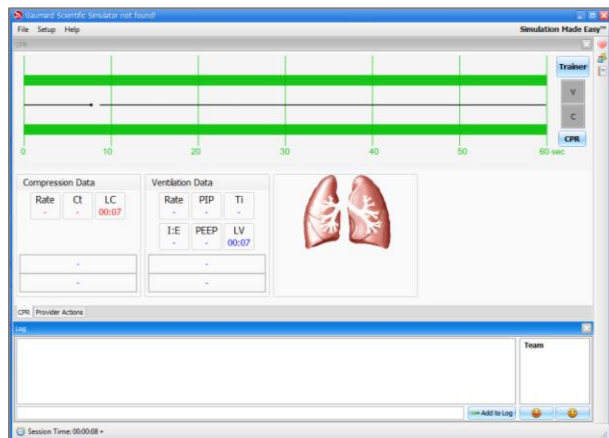
Double click on the CPRLink icon on the desktop of your PC.



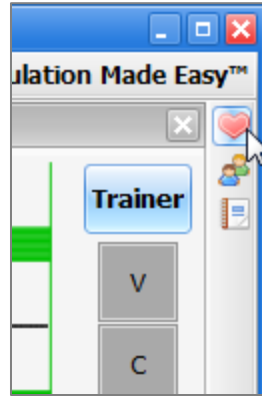
CPR Screen

The CPRLink main screen contains the drop down menus used to save and clear session logs, change the application options, and access the program’s help.

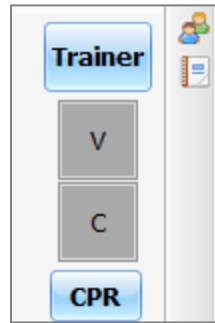
The main screen also contains the controls used to evaluate compressions and ventilations.



Open the CPR evaluator by clicking on the shortcut icon located on the upper right side of the application.

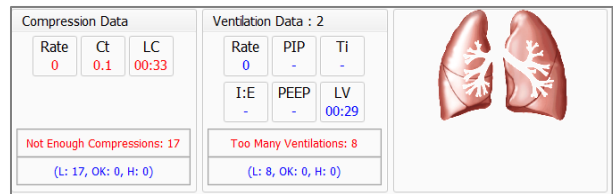


The provider performance indicator boxes are located on the right. The V (ventilation) and C (compression) box fill color changes between the following states:



- **Grey** - No intervention was detected.
- **Yellow** - Compression was too shallow. Ventilation was too weak.
- **Green** - Compression/ventilation was performed correctly.
- **Red** - Compression was too deep. Ventilation was too strong.

Compression and ventilation data is displayed at the bottom of the window as CPR is performed by the provider.



Compression Data

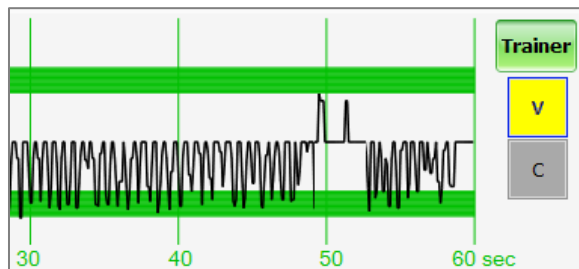
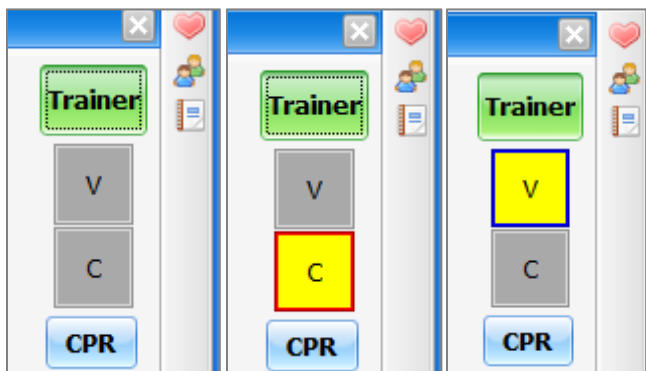
- **Rate** - Rate of compressions in real time.
- **Ct** (Compression time) - Average length of each compression in seconds.
- **LC** (Last Compression) - Time elapsed since the last compression performed.

Ventilation Data

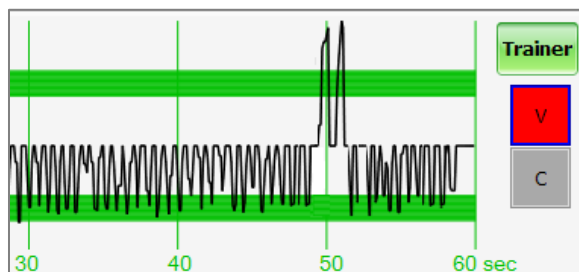
- **Rate** - Ventilation rate in real time.
- **PIP** - (approx.) Peak Inspiratory Pressure
- **Ti** - Time inspiration
- **I:E** - Inspiratory: Expiratory ratio
- **PEEP** - (approx.) Positive End Expiratory Pressure.
- **LV** (Last Ventilation) - Time elapsed since the last ventilation performed.

Trainer

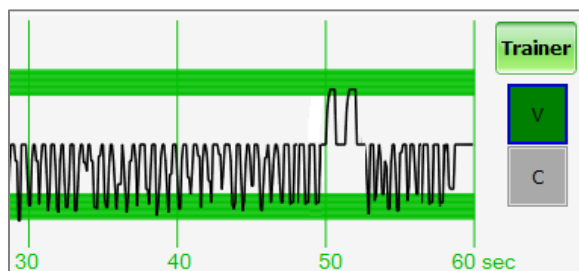
The CPRLink application generates visual and audible cues of the compression to ventilation ratio programmed in the CPR Options menu. When the **Trainer** button is clicked, the V (ventilations) and C (compressions) box borders blink to indicate the correct reference CPR rate. A high-pitched beep signals the care provider to perform a compression and a low pitched-beep signals a ventilation.



Ventilations are too strong. Waveform peaks exceed the green zone.

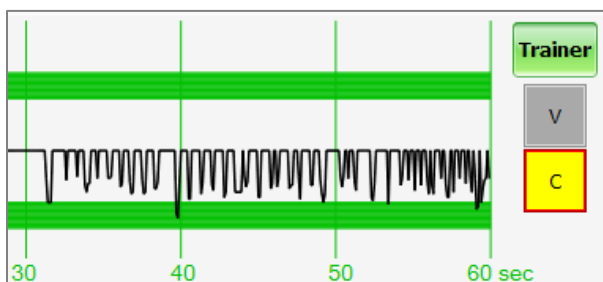


Ventilation was performed correctly. Waveform peak is inside the green zone.

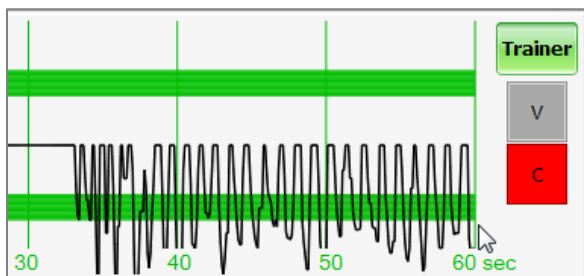


Performance Examples

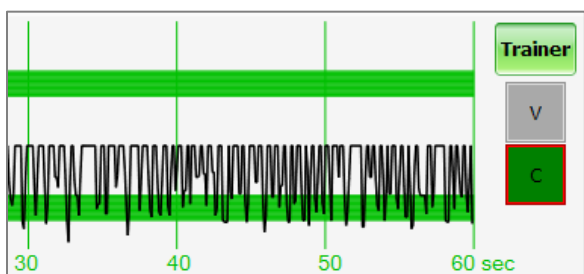
Compressions are too shallow. Most waveform peaks do not reach the green zone. Compression indicator is yellow.



Compressions are too deep. Waveforms peaks mostly exceed the green zone. Compression indicator is red.



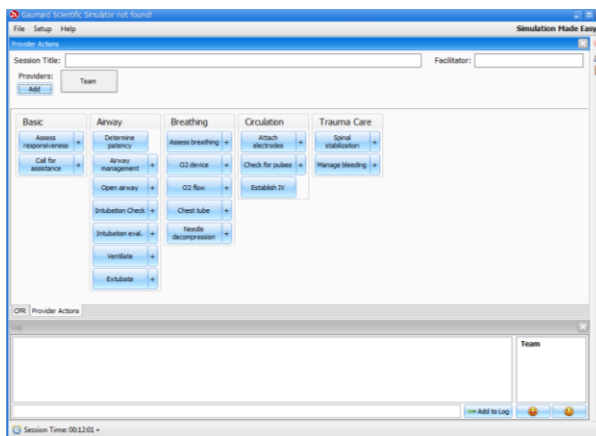
Compressions are performed correctly. Waveform peaks are mostly inside the green zone.



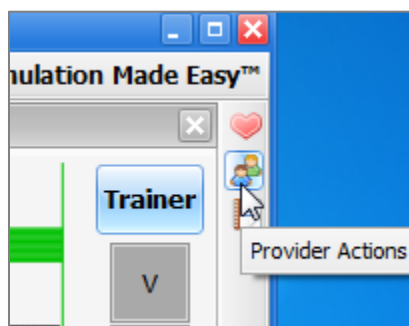
Ventilations are too shallow. Waveform peaks do not reach the green zone.

Provider Actions Screen

The provider actions screen allows the facilitator to keep track of every event during a session. It automatically creates an entry whenever a detected event occurs. Also, the facilitator can log provider actions with a simple click.



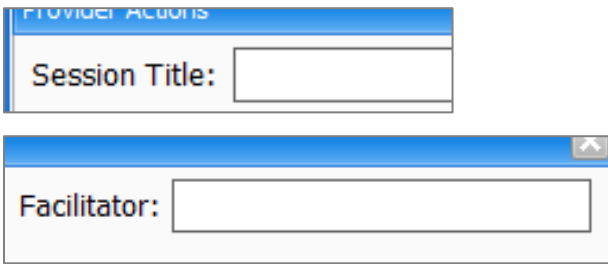
Open the provider actions screen by clicking on the shortcut icon located on the upper right side of the application.



The Provider Actions screen consists of four different areas (from top to bottom): session info, team logging buttons, provider action buttons, and text log.

Session Info

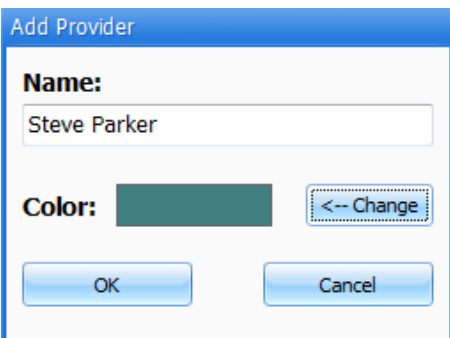
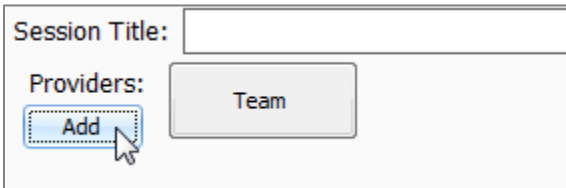
The header section consists of the 'Session Title' and 'Facilitator' fields at the top of the Team Logging section. Type the session title and facilitator name directly into the note field. It serves as assisting with record keeping purposes when a report is saved or printed.



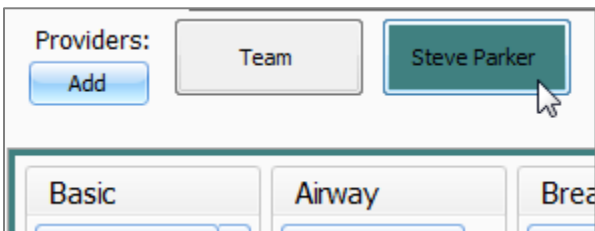
Team Logging

The Team Logging feature allows the facilitator to designate which member of the team performed a particular action. The Team Logging section is right above the Provider Actions section.

First, the facilitator should add all providers in the team, one by one, by clicking the Add button and filling out the Add Provider dialog box.



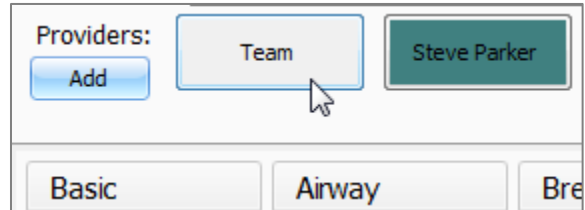
A colored button is inserted on the Team Logging region for the provider just added. There can be up to six different providers, each with a corresponding button. Every time one of the provider buttons is clicked, that person becomes the active provider. To indicate the active provider, the vertical bars on each side of the Log page will match the color chosen for that person.



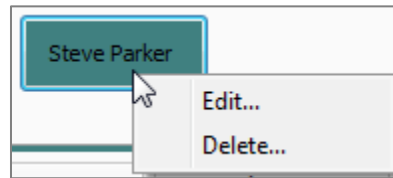
On the Log Page image, for example, the provider "Steve" is the active provider, so the vertical bars are teal colored. While there is an active provider, every time a Provider Action or Evaluation log entry is created it will have the name of the provider as follows:

"00:07:41 [Steve Parker] Action (Ventilate): BVM"

To deselect the active provider and return to general logging, click the *Team* button and the vertical bars will return to neutral color.

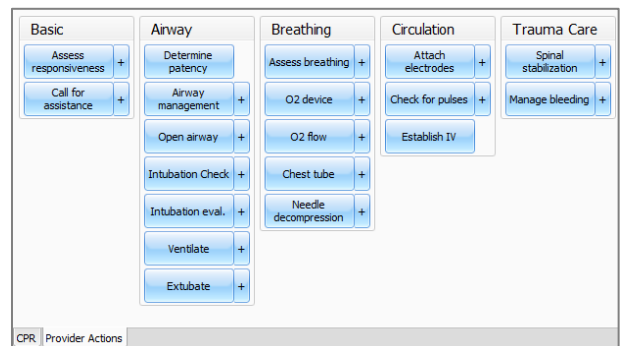


All provider buttons can be edited or deleted by right-clicking them and selecting an option from the menu.



Provider Actions

This section refers to the collection of buttons in the middle of the page. It allows the facilitator to accurately keep track of provider actions. The buttons are grouped into 6 groups: Basic, Airway, Breathing, Circulation, and Trauma Care. Anytime the facilitator clicks one of the buttons, a time-stamped log entry is generated with that particular action.



For example, if the 'Assess responsiveness' button is clicked when the session clock reads 00:03:36, the following entry is automatically generated:

"00:03:36 Action (Assess Responsiveness)"

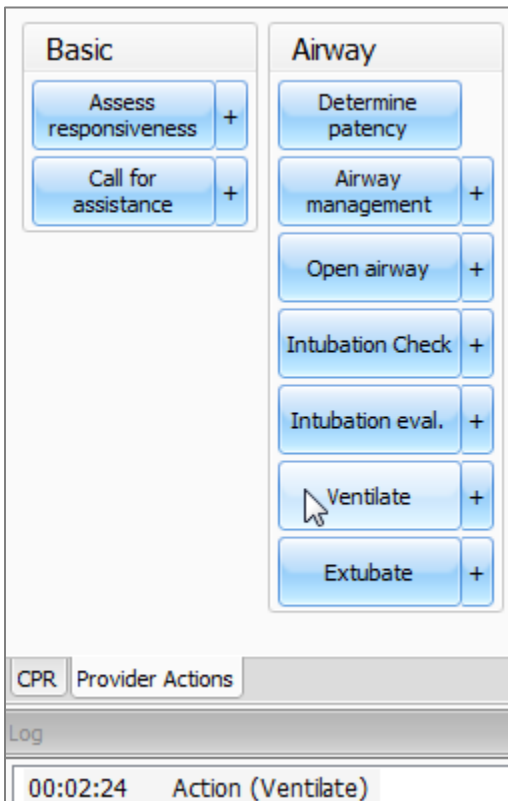


Special Button

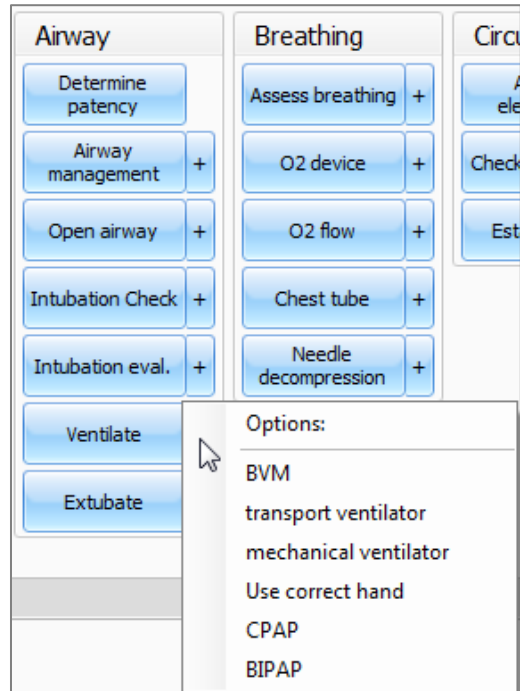
The special button adds additional functionality to the provider actions section.

The button, ' + ', allows the facilitator to be more specific on the provider action he/she wishes to log. For example, if the button 'Ventilate' is clicked, the following entry is created:

"00:02:24 Action (Ventilate)"

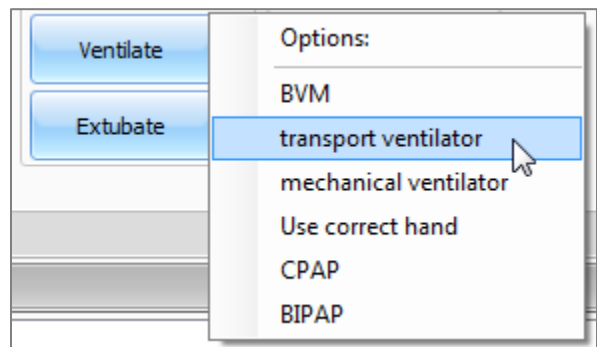


On the other hand, if the ' + ' button next to 'Ventilate' is clicked, a list of additional options appears.



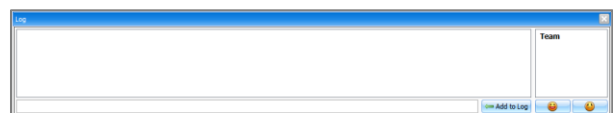
The facilitator can be more specific and choose, for example, 'transport ventilator'... and the following entry is added:

"00:01:28 Action (Ventilate): transport ventilator"



Text Log

This is the large panel at the bottom of the Log Page, containing all the time-stamped text entries. Every event on a session is reflected as an entry in the Text Log.



Open the Text Log by clicking on the shortcut icon located on the upper right side of the application.



The different types of entries are classified as Actions, Detected Events, Evaluations, and Notes.

Text Log is subdivided in four different functions:

Actions

Actions refer to those performed by one of the providers in the session. The facilitator can quickly log actions from the Provider Actions section and make the entry more specific using the Team Logging feature. The following is an example of an Action entry:

"00:07:24 Action (Assess responsiveness)"

Detected Events

Each time one of the various sensors in the simulator detects a provider action, it is automatically logged as a 'Detected' entry. These actions include intubation, BP cuff placement, artificial ventilations, and chest compressions. The following example shows an entry after a provider administrates a chest compression:

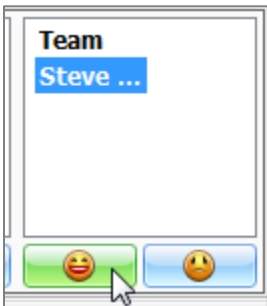
"00:05:36 Detected (chest compression): too weak"

Evaluations

The facilitator adds evaluations by clicking on the 'Satisfactory' or 'Unsatisfactory' buttons next to Text Log.



The facilitator can evaluate individual providers with a single click.



For example, if provider Steve Parker did a correct procedure, the Evaluation entry would be:

"00:36:01 [Steve Parker] Evaluation (Care Provided): Satisfactory"

00:36:01 [Steve Parker] Evaluation (Care Provided): Satisfactory

Notes

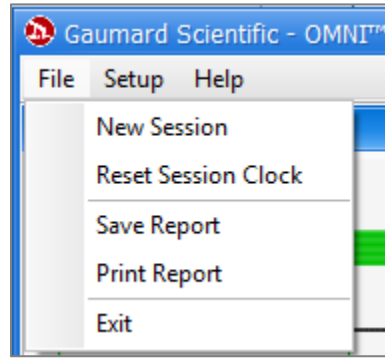
Notes can be entered directly in the Text Log. The following is an example of a Note entry:

"00:51:09 [Steve Parker] Note: provider took too long to assess patient."

00:51:09 [Steve Parker] Note: provider took too long to assess patient

CPRLink Menus

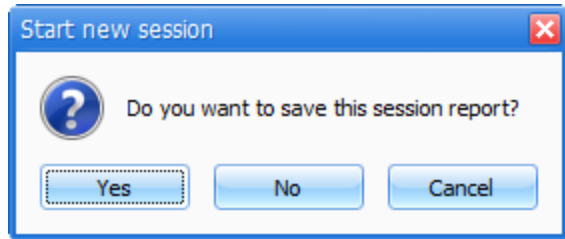
File



New Session

Clicking New Session in the file menu will:

- Start a new simulation session
- Clear out log page
- Restart the session clock



The session clock is located at the bottom of the Log box.

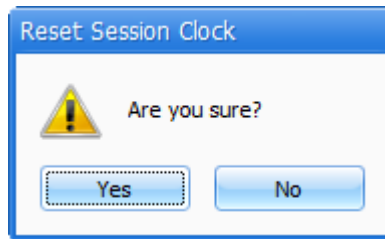


You can also start a new session by clicking on the session clock drop down menu, located at the bottom of the Log box, and selecting **New Session**.

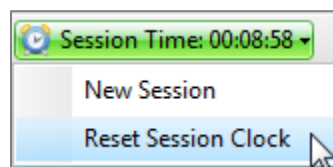


Reset Session Clock

Clicking on Reset Session Clock resets the clock back to zero.

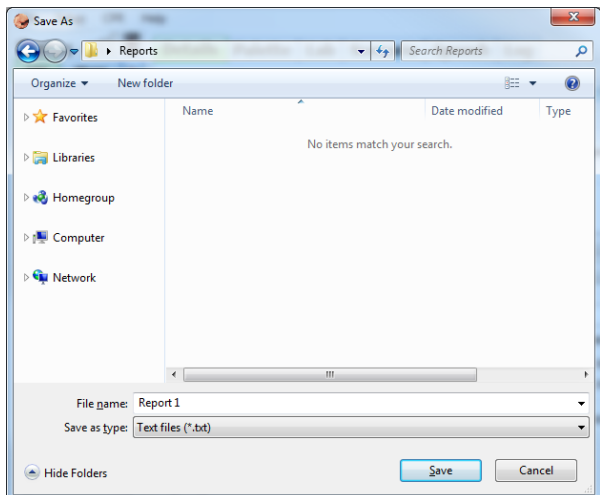


Reset the session Clock by clicking on the session clock drop down menu, located at the bottom of the Log box, and selecting **Reset Session Clock**.



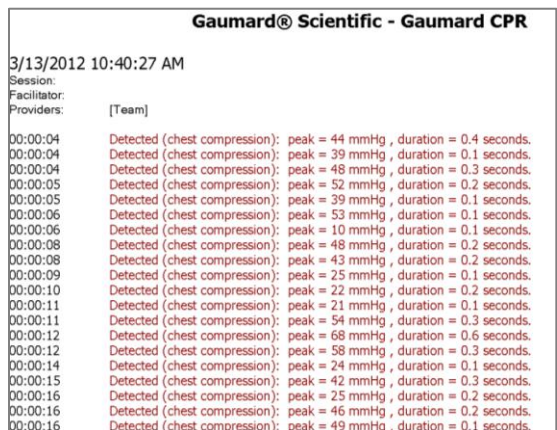
Save Report

This option allows you to save all the information recorded in the log page as a text file. Clicking on it brings up the Save As dialog box:



Select the desired name and path, and click “Save”.

A sample report is below:



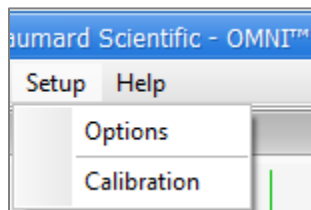
Print Report

This option allows you to print a text file containing all the information in the log for the latest session. Clicking on Print Report brings up the Print dialog box.

Exit

You can exit the application at any time by going to File, Exit or by clicking on the red “x” button at the top right corner of the CPRLink.

Set-up



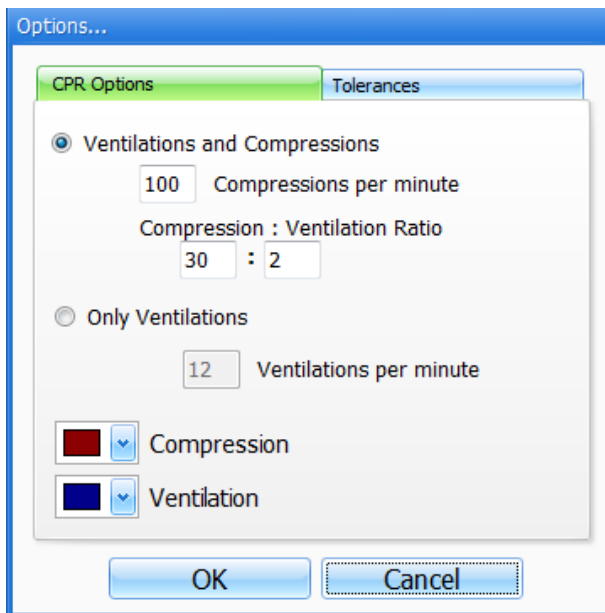
Options

The Options window contains the parameters accessible to the user for configuration.

CPR Options

- Select the number of desired compressions per minute.
- Specify the compression/ventilation ratio
- Select number of ventilations per minute (if the ‘Only Ventilations’ option is selected).

CPRLink will retain the options, tolerances and calibration data last entered.

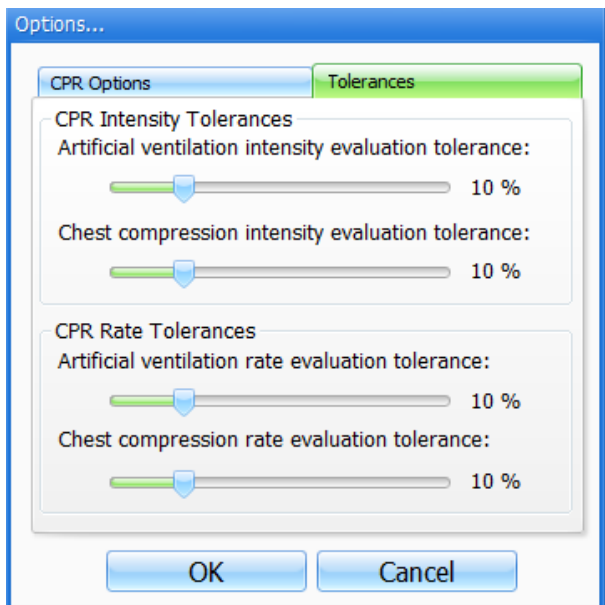


Tolerances

Select the tolerance and intensity of both chest compressions and ventilations. These parameters change the percentage deviation permitted while evaluating a compression or ventilation.

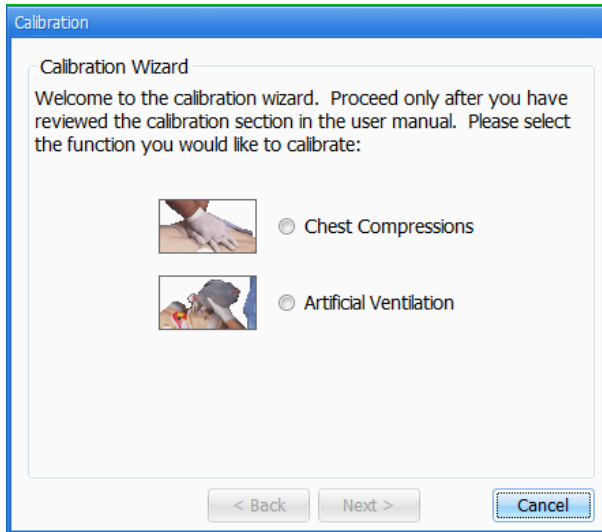
Intensity Tolerances: if the user has calibrated the software, these tolerances represent permissible deviation from the compressions or ventilations entered during the calibration procedure, otherwise the program uses default sensor values.

Rate Tolerances: the rate tolerance parameter sets the permissible deviation from the selected compression set. For example, if the user sets the Compression Rate at 100 compressions / minute and the Compression Rate Tolerance at 10 %, any compression frequency between 90 and 110 compressions per minute will be considered correct.



Calibration

This tool allows you to easily calibrate the sensors inside the simulator. First choose which function you would like to calibrate: chest compressions or artificial ventilations.

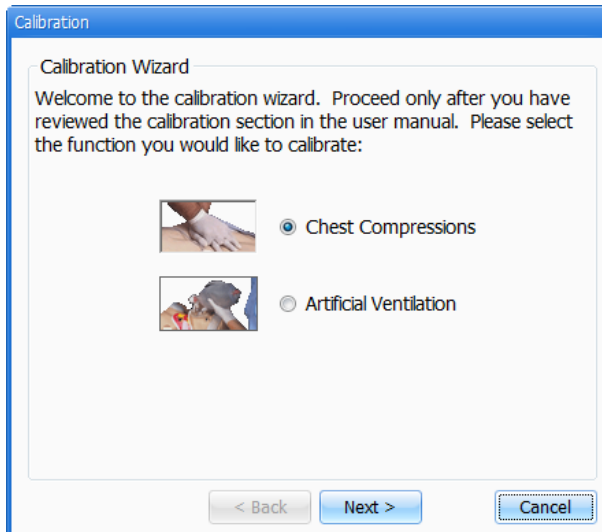


The procedures for each specific calibration are described in the sections below.

Chest Compressions/Artificial Ventilations

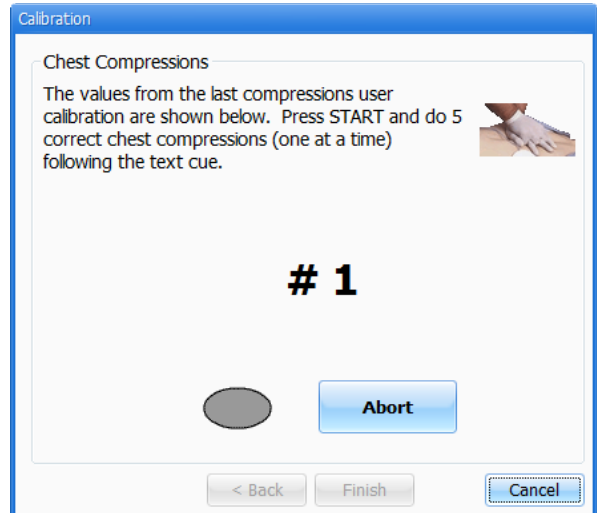
This tool allows you to calibrate the chest compressions and the artificial ventilations to your specific criteria. That is, you will be telling the system what a correct chest compression is and/or what a correct artificial ventilation is. Providers will be evaluated by the system based on this criteria.

The chest compressions and ventilations are calibrated in the same way. After making a selection, this dialog box is displayed:



Click next to proceed with the calibration.

The application will now ask you to perform a number of “correct” chest compressions or artificial ventilations, depending on which was selected.



The facilitator should follow the text cue on the screen to perform just ONE compression or ventilation at a time, until prompted for successive compressions/ventilations.

For example, if calibrating chest compressions:

The wizard prompts you with a “#1”.

1. Perform one correct chest compression. A green filled oval indicates that the chest compression was successfully recorded.

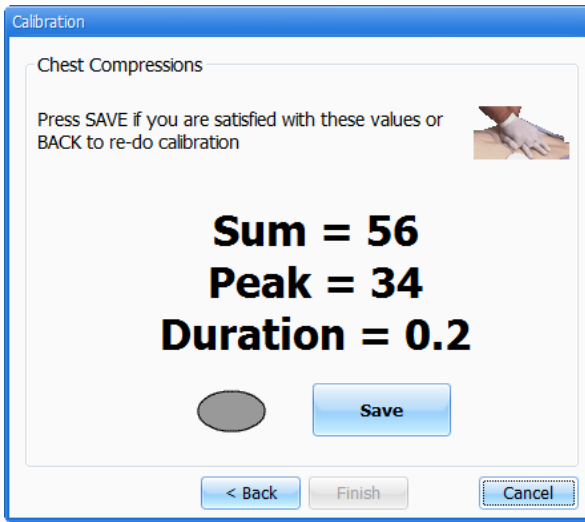
The wizard prompts you with “#2”.

2. Perform a second correct chest compression.

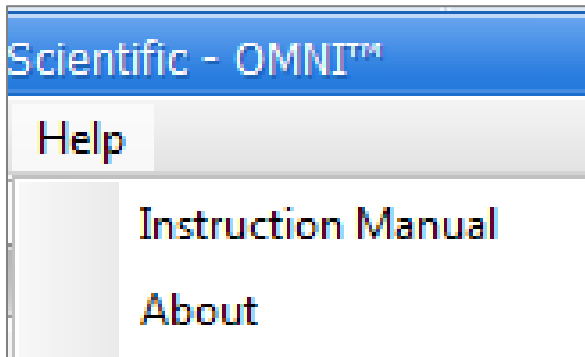
A green filled oval indicates that the chest compression was successfully recorded.

3. Continue the process.

At the end of the calibrating session, the wizard shows the average peak, depth, and duration values for the procedure.



Help



Instructional Manual

Open the instructional manual.

About

Click to view the version of the software.



Appendix

Where is the Serial Number of Omni and my Simulator

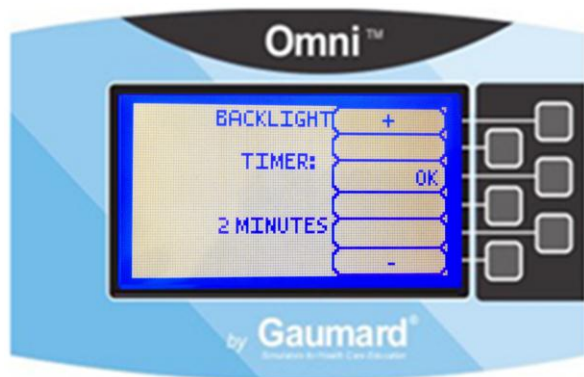
To view the serial number of your Omni controller and simulator, access the **HELP** menu from Omni and select **SERIAL**.



Screen Backlight

The default value for Omni's backlight timer is 10 minutes. After 10 minutes the backlight will turn off.

To increase the backlight duration, go to the **HELP** menu and select **BACKLIGHT**. Adjust the backlight timer with the plus or minus sign. Press **OK** to accept the changes.



How to reboot Omni

1. Disconnect the communication cable from Omni.
2. Wait for 20 seconds and reconnect the cable.

Check for Updates

To check and install software upgrades for your Omni controller follow these simple steps:

1. Go to our website, www.Gaumard.com.
2. Click on Software Updates.
3. Select Omni.
4. Connect Omni to your PC using a USB cable.
5. Download and run the Omni file.

Troubleshooting

General Troubleshooting Guide

Use the following table to find causes and solutions to a number of possible problems.

Symptom	Possible Cause	Solution
Omni is not turning ON	Power supply not connected to simulator	Connect the power supply cable to the simulator and the other end to a power source
	Communication cable not connected to Omni	Connect the communication cable to the simulator and to Omni.
	Communication cable not connected to simulator	Connect the communication cable to the simulator and to Omni.
I lost communication with the simulator	Corrupted connection	Reboot Omni
Omni is not detecting any compression or ventilations	System is not calibrated	Calibrate compressions and ventilations in Omni
Omni detects compression but not ventilations	Module in the simulator is disconnected	Contact technical support to troubleshoot problem
Ventilations and compressions are not accurate	Altitude	Reset pressure sensor

Consumables and Replacements

Selected Parts List

Item ID	Name	Description
X.180	Omni Controller	Hand held controller
X.180.1	Communication Cable	Cat 5 cable
X.180.2	USB Cable	CPRLink cable

Where **X** is any of the following simulators: S102, S104, S105, S112, S114, S115, S152, S154, S155, S309, S311, S315, S315.100, S315.300, S200, S201, S205, S206, S221, S222, S222.100, S303, S304, S107, S108, S117, S157, S320.100, S320.101, S550, S550.100, S551, S552, S410, and S410.100.

Contact Us

E-mail Technical Support:

support@gaumard.com

Before contacting Tech Support **you must**:

1. Have Omni/simulator's Serial Number
2. Be next to Omni/simulator if troubleshooting is needed.

E-mail Sales and Customer Service:

sales@gaumard.com

Phone:

Toll-free in the USA: (800) 882-6655

Worldwide: 01 (305) 971-3790

Post:

Gaumard Scientific

14700 SW 136 Street

Miami, FL 33196-5691

USA

Office hours:

Monday – Friday, 8:30 am - 4:30 pm EST
(GMT -5, -4 Summer Time)

Warranty

EXCLUSIVE ONE-YEAR LIMITED WARRANTY

Gaumard warrants that if the accompanying Gaumard product proves to be defective in material or workmanship within one year from the date on which the product is shipped from Gaumard to the customer, Gaumard will, at Gaumard's option, repair or replace the Gaumard product.

This limited warranty covers all defects in material and workmanship in the Gaumard product, except:

1. Damage resulting from accident, misuse, abuse, neglect, or unintended use of the Gaumard product;
2. Damage resulting from failure to properly maintain the Gaumard product in accordance with Gaumard product instructions, including failure to properly clean the Gaumard product; and
3. Damage resulting from a repair or attempted repair of the Gaumard product by anyone other than Gaumard or a Gaumard representative.

This one-year limited warranty is the sole and exclusive warranty provided by Gaumard for the accompanying Gaumard product, and Gaumard hereby explicitly disclaims the implied warranties of merchantability, satisfactory quality, and fitness for a particular purpose. Except for the limited obligations specifically set forth in this one-year limited warranty, Gaumard will not be liable for any direct, indirect, special, incidental, or consequential damages, whether based on contract, tort, or any other legal theory regardless of whether Gaumard has been advised of the possibilities of such damages. Some jurisdictions do not allow disclaimers of implied warranties or the exclusion or limitation of consequential damages, so the above disclaimers and exclusions may not apply and the first purchaser may have other legal rights.

This limited warranty applies only to the first purchaser of the product and is not transferable. Any subsequent purchasers or users of the product acquire the product "as is" and this limited warranty does not apply.

This limited warranty applies only to the products manufactured and produced by Gaumard. This limited warranty does not apply to any products provided along with the Gaumard product that are manufactured by third parties. For example, third-party products such as computers (desktop, laptop, tablet, or handheld) and monitors (standard or touch-screen) are not covered by this limited warranty. Gaumard does not provide any warranty, express or implied, with respect to any third-party products. Defects in third-party products are covered exclusively by the warranty, if any, provided by the third-party.

Any waiver or amendment of this warranty must be in writing and signed by an officer of Gaumard.

In the event of a perceived defect in material or workmanship of the Gaumard product, the first purchaser must:

1. Contact Gaumard and request authorization to return the Gaumard product. Do NOT return the Gaumard product to Gaumard without prior authorization.
2. Upon receiving authorization from Gaumard, send the Gaumard product along with copies of (1) the original bill of sale or receipt and (2) this limited warranty document to Gaumard at 14700 SW 136 Street, Miami, FL, 33196-5691 USA.
3. If the necessary repairs to the Gaumard product are covered by this limited warranty, then the first purchaser will pay only the incidental expenses associated with the repair, including any shipping, handling, and related costs for sending the product to Gaumard and for sending the product back to the first purchaser. However, if the repairs are not covered by this limited warranty, then the first purchaser will be liable for all repair costs in addition to costs of shipping and handling.

Extended Warranty

In addition to the standard one year of coverage, the following support plans are available:

- Two-Year Extension (covers second and third years)
- Call for pricing (USA only)

© 2012 Gaumard Scientific Company, Inc. All rights reserved.

Gaumard®, CODE BLUE® are trademarks of Gaumard Scientific Company, Inc.

Patented; other patents pending.

Always dispose of this product and its components in compliance with local laws and regulations.



Toll Free: USA 800.882.6655 – Worldwide: 305.971.3790 – Fax: 305.667.6085
Email: sales@gaumard.com – www.Gaumard.com - Gaumard® Scientific, 2012